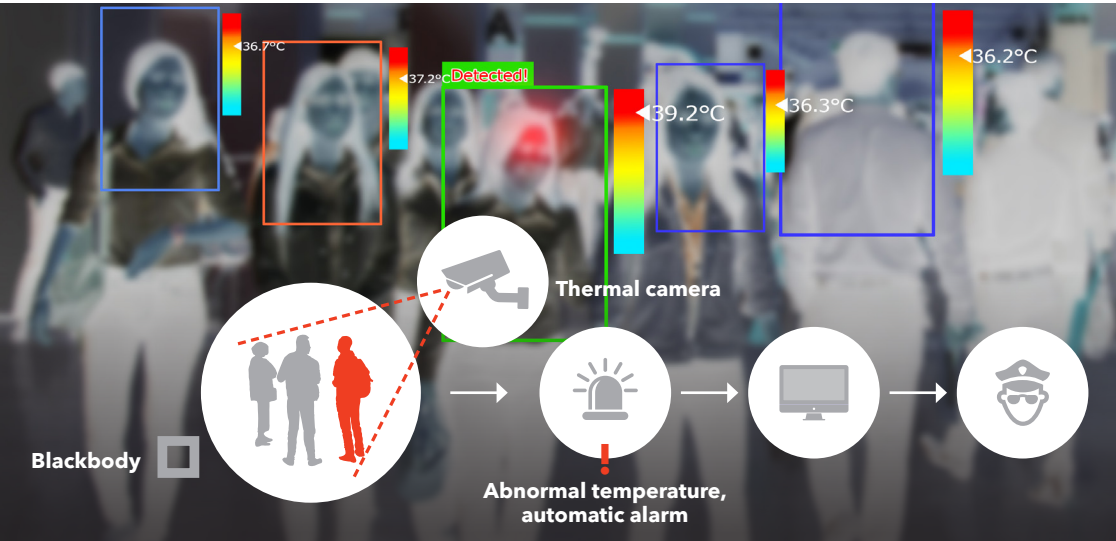


Solution for mass noncontact temperature measurement



- ▶ Automatic measurement of the temperature of persons entering the building
- ▶ Measurement accuracy of systems and sets offered by us from 0,3°C
- ▶ Automatic detection, alarms, statistics, remote access with the possibility of connection to M2C Space

We install products from manufacturers:

AVESTECH

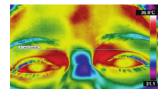
alhua

HIKVISION

THE MOST ACCURATE SOLUTION

Fixed temperature measurement of persons entering the premises using a thermal camera and a blackbody (reference point) with an accuracy of $\pm 0.3^{\circ}\text{C}$ over a distance of up to 5 meters.

We offer a dual temperature measurement solution, where we read face temperature and eye temperature in parallel. This achieves high accuracy while minimizing external temperature effects.



ECONOMIC SOLUTIONS

Fixed temperature measurement of persons without reference point using thermal camera with accuracy $\pm 0.5^{\circ}\text{C}$.



THE CHEAPEST SOLUTION

Handheld temperature measuring systems with thermal camera with an accuracy of $\pm 0.5^{\circ}\text{C}$.



We would like to develop you design of system and solution to your building and requirements.